

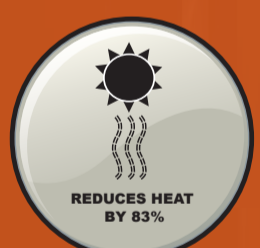
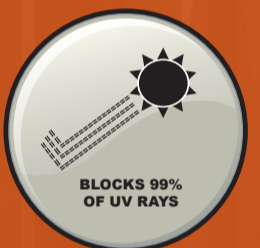
# cantaport

cantaport

Y CONNECTION

## PJF series

**MADE  
IN  
JAPAN**



# cantaport

cantaport

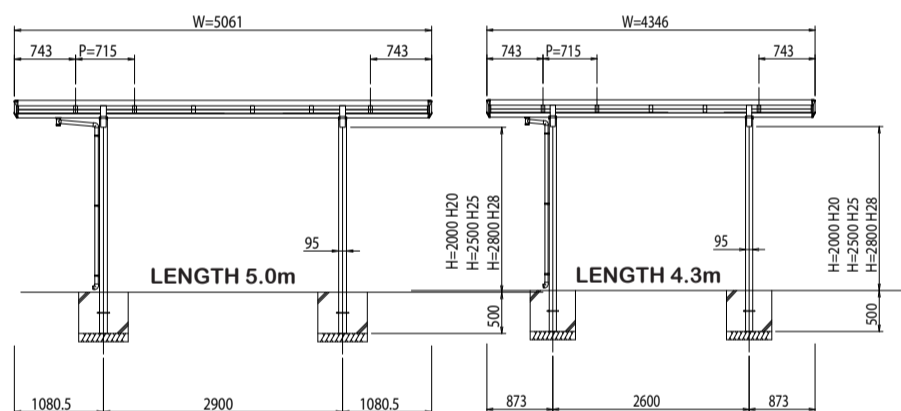
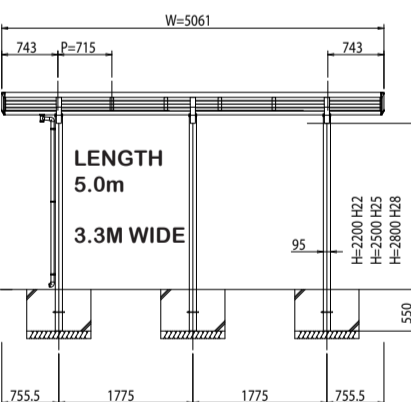
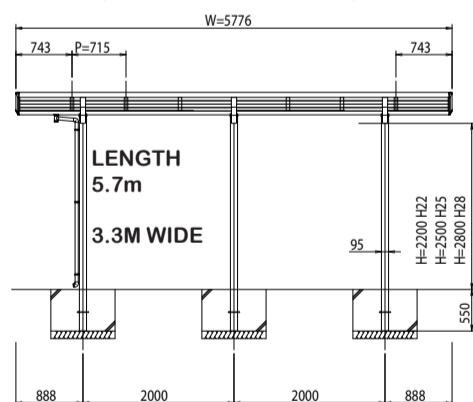
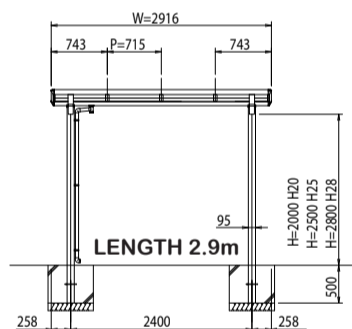
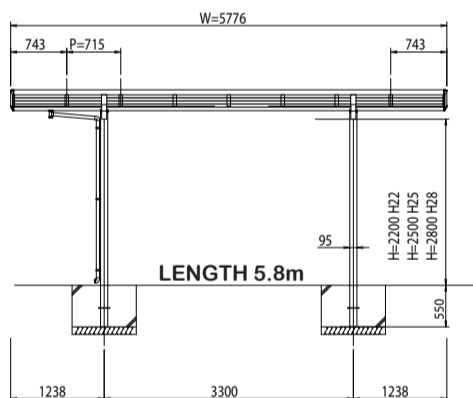
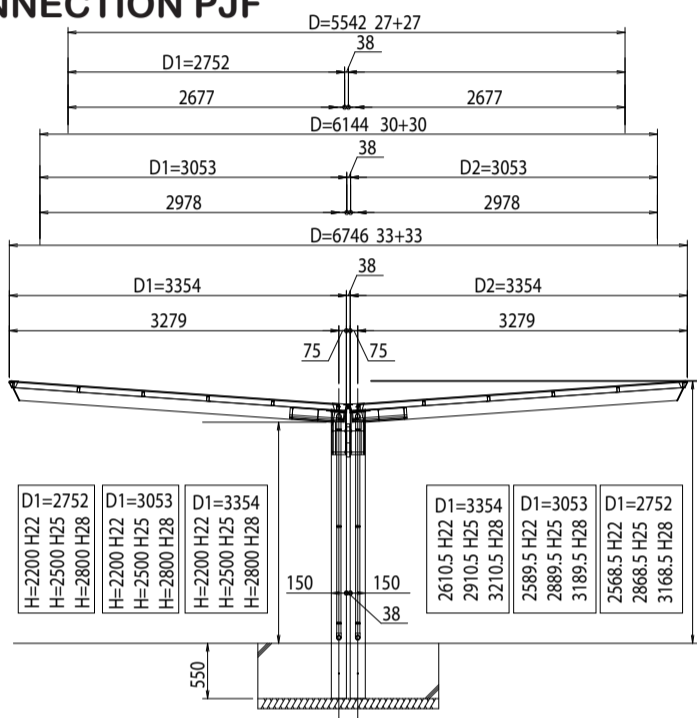
## Y CONNECTION

# PJF series

**MADE IN JAPAN**



### Y CONNECTION PJF



### CANTAPORT SHADING SYSTEMS S(PJF) SERIES

(Wind Region A, Terrain Category 2,3 & 4)

#### NOTE:

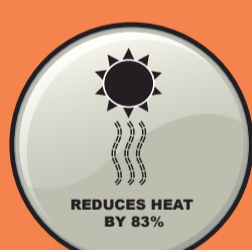
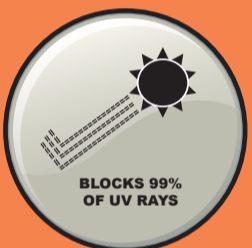
- IT IS RESPONSIBILITY OF BUILDER TO NOTIFY THE OWNER THAT NO LIVE POINT LOADING IS ALLOWED ON PURLIN.
- COLUMNS ARE NOT DESIGNED FOR VEHICLE IMPACT LOAD.

#### 1. DESIGN CRITERIA

- WIND REGION A. TERRAIN CATEGORY 2, 3 OR 4. IMPORTANCE LEVEL 1  $V_r = 41\text{m/s}$
- CLASS A, S, M OR H SITES TO AS2870. MINIMUM ALLOWABLE SOIL BEARING CAPACITY 100 kPa. THIS DETAIL IS ONLY RELEVANT FOR PROJECTS WHICH MATCH THE ENGINEERING ARRANGEMENTS. IT IS THE BUILDER'S RESPONSIBILITY TO ENSURE THAT ANY / ALL MANUFACTURER SPECIFIC REQUIREMENTS ARE MET. REFER TO THE MANUFACTURER'S INSTALLATION MANUAL AND SPECIFICATIONS AT [WWW.CANTAPORT.COM.AU](http://WWW.CANTAPORT.COM.AU) FOR IMPORTANT INFORMATION.

#### 2. CONCRETE

- CONCRETE MINIMUM 20MPa, POURED INSITU. REFER TO THE ENGINEERING DETAILS FOR SIZE OF CONCRETE FOOTING.



**GUARANTEED & TESTED**

**Genuine & Original**

BEWARE OF CHEAP IMITATIONS

